



Executive Haven

🏠 2 🛏️ 4 🚿 3-5 🛋️ 2 📺 1

Total Area 256 sqm

SHOWHOME

2 Glenturret Drive, Highsted
Open Friday, Saturday & Sunday 12.00pm - 4.00pm
or by appointment

This stunning Executive home, set in the acclaimed Highsted subdivision is in a class of it's own. This is one showhome not to be missed.



David Reid Homes Canterbury

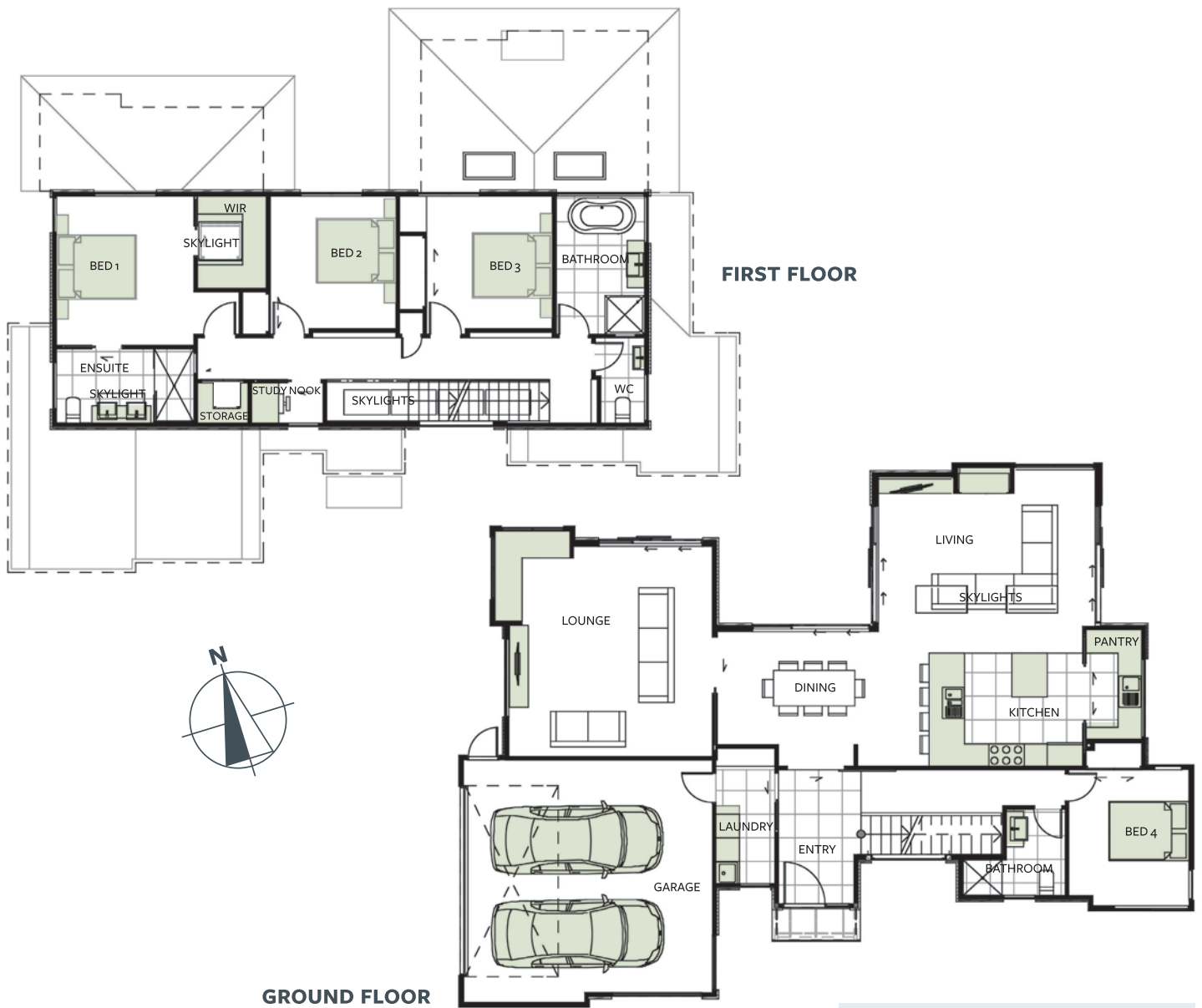
First Design and Build Ltd

P. 03 335 0499

A. 2 Glenturret Drive, Highsted

0800 000 007 | davidreidhomes.co.nz





Total Area 256 sqm

This architecturally designed 4 bedroom home features spacious open plan living areas incorporating an entertainer's dream kitchen, dining and living areas. These areas all interact with ease, with the separate lounge and entry level decking creating further seamless indoor/outdoor flow.

The natural beauty of timber is reflected in the Quickstep Variano timber flooring, further enhanced by the amount of natural light from the abundance of skylights. Feature steel and timber staircase with hidden LED light strips add to the elegance of this home.

This home is another stunning example of the quality craftsmanship David Reid Homes Canterbury prides themselves in.

Length 18.6m
Width 13.75m

Living

Living 5.6x4.4
Dining 5.4x2.9
Family 5.2x5.4
Kitchen 3.9x3.0
Study 1.8x1.0

Bedrooms

Master 3.5x3.8
Bed 2 3.2x3.3
Bed 3 3.2x3.3
Bed 4 3.0x3.2

Garage

6.3x5.9

Ground Floor Area 172m²
First Floor Area 84m²

Total Area 256m²

Specifications

Structural Integrity

- TC2 Ribraft Foundation
- LVL Framing

Exterior Cladding & Roof

- Diamond DP955 Rib Profile
- StoPoren AAC Plaster system
- James Hardie 300mm Horizontal Linea Oblique

Joinery / Doors

- Metro 40mm aluminum suite
- Urbo hardware
- 2200mm high Internal Doors

Bathrooms

- Vanities: Newtech Ravanni in Washed Oak
- Bath: Newtech Rio freestanding bath
- Basins: Caroma Artisan

Kitchen

- Bestwood “Black Wilderness” and Melteca “Snowdrift Satin” to cabinetry
- 40mm “Absolute Black” Granite to Island bench

Wardrobes

- 25mm I-Robe wardrobe systems with full extension soft close drawers

Flooring

- Cavalier Bremworth Enduro collection Beltway carpet with Stratus underlay
- Quickstep Variano engineered timber overlay flooring

Electrical

- Zen switchgear and powerpoints to living areas
- Iconic Switchgear and powerpoints to all other areas
- Low energy LED lights
- LED strip lighting to staircase

Heating

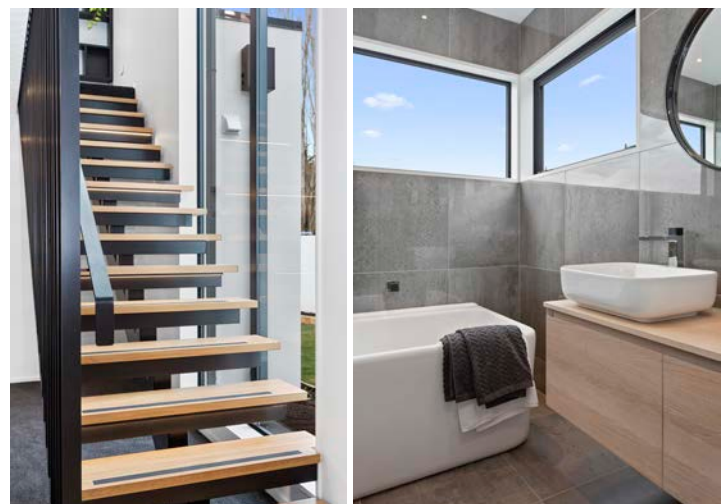
- Escea DL1100 Gas fire to Living
- Fujitsu Hi wall heat pump to Lounge
- Fujitsu fully ducted heat pump system to Kitchen, Dining, Living and all bedrooms

Insulation

- Pink Batts “Silencer” acoustic insulation between bedrooms and bathrooms

Notes

- Feature inbuilt joinery to Lounge, Living, upstairs hallway and study
- Steel and timber staircase with feature slat steel balustrade and handrail
- Steel louvres and entry canopy Skylights to Stairwell, Living and Ensuite





David Reid Homes Canterbury
 First Design and Build Ltd
 P. 03 335 0499
 A. 2 Glenturret Drive, Highsted
 0800 000 007 | davidreidhomes.co.nz

