



A Home to Love



Total Area 227 sqm

SHOWHOME

86 Weston Road, Weston, Oamaru
Open by appointment only

This home has been built to accommodate a growing family, with open plan living, dining and kitchen, with an integrated family room nearby. Designed to attract all day sun, starting in the kitchen in the morning through to the alfresco dining and family room in the evening. Clad in Rockcoat Plaster with Cedar weather board gable ends, the home slots seamlessly into the North Otago Landscape.

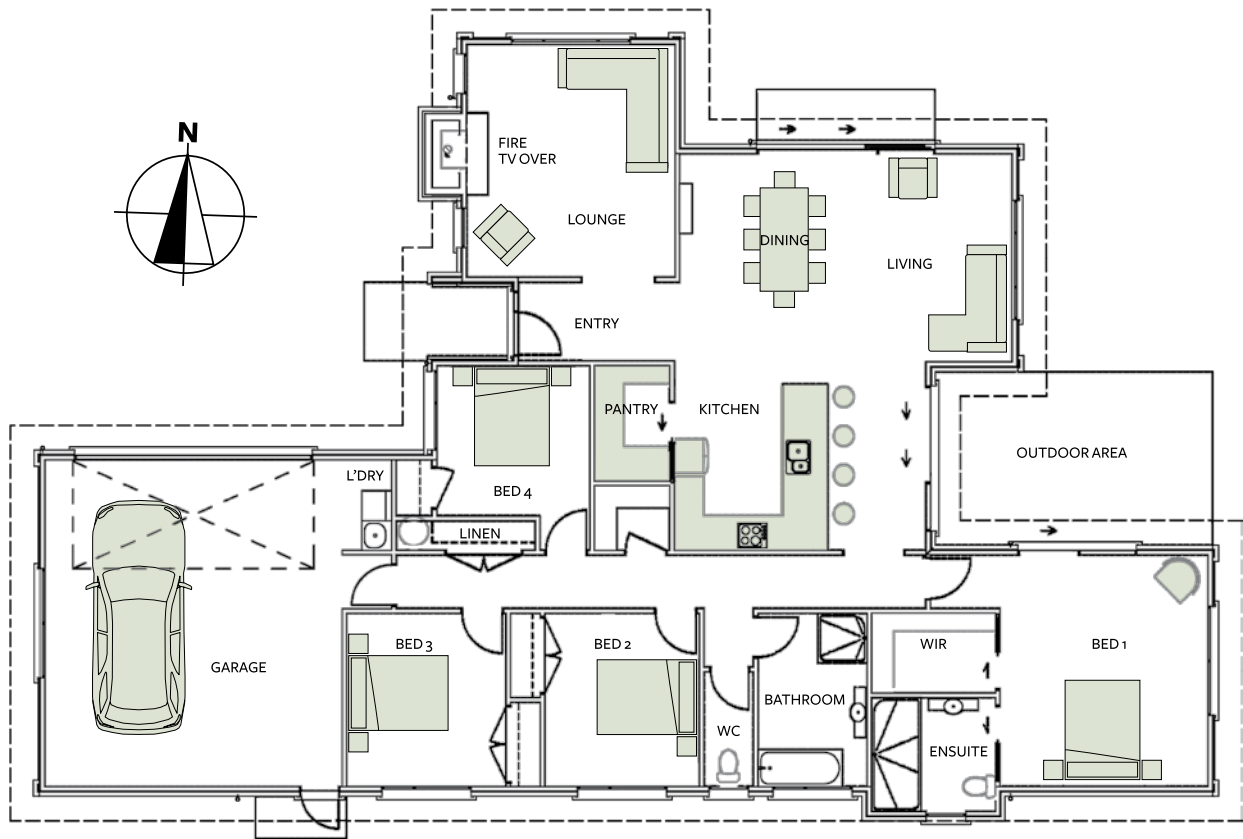


David Reid Homes Waitaki/South Canterbury
Build Mack (2016) Ltd

P. 03 426 0040 **M.** 027 901 7547 **A.** 86 Weston Rd, Weston, Oamaru
E. aaron.mackay@davidreidhomes.co.nz

0800 000 007 | davidreidhomes.co.nz





Total Area 227 sqm

This home boast four generous sized bedrooms with the master suite encompassing a walk in wardrobe and large ensuite.

The living areas flow together, being separated by large door ways. The wood burner fire provides a snug atmosphere with the heat pump also on hand for those cooler days.

The heightened ceilings and over sized doors give the sense of space and comfort.

The main deck is hugged by gabion baskets, before flowing onto the lawn and the well landscaped outdoors. The master suite and the kitchen share a deck, both with large stacker glass doors, for the perfect breakfast spot.

Length 23.7m
Width 15.7m

Living

Kitchen 3.6x2.5
Pantry 1.5x2.6
Dining/Living 6.7x4.4
Family 3.4x4.8

Bedrooms

Master 4.8x4.2
Bed 2 3.1x3.5
Bed 3 3.2x3.5
Bed 4 3.2x3.1

Garage

6.0x6.6

Total Area 227m²
Outdoor Area 43m²

If you love the design of the house but want to change some aspects of the layout of specifications we are happy to customise it to your requirements. Floor plans can also be tailored to suit your building site to optimise views, sun and protection from the elements. All plans are copyrighted and no part may be reproduced or copied without prior written consent from David Reid Homes.



Specifications

Structural Integrity

- NZ53604 foundation
- 190 x 45 LVL framing

Exterior Cladding & Roof

- Rock coat Graphex insulated facade system
- Cedar 150 Shiplap
- Long run Coloursteel Roof

Joinery / Doors

- Over height designer Manhattan internal
- Windsor Qube handles
- Double-glazed residential windows
- Iron sand front door
- Vantage - metro and residential over height joinery

No Step, Single Level Exit

- 2.55 stud height throughout
- Level entry/exit and decks

Bathrooms

- Global Tile Hexagon Taupe Natural
- QU113A 300x600
- Vanities:
- Toilets: 2 x separate
- Heated towel rails
- Mirror:
- Tapware:

Kitchen

- Custom-designed kitchen and walk-in pantry by Firman joinery
- Soft-close cavity slider
- Euro edge bench top
- Fisher + Paykel appliances, including fridge, oven, rangehood, dishwasher & cooktop

Flooring

- Smart Strand silk 'Delicate Charm' carpet
- Polished concrete 'Hiper Floor' in entry, living, dining, kitchen and laundry

Electrical

- PDL 800 series power points and switch plates
- Bo Concept 'Lotus' pendants
- Low energy LED lights
- Citta 'Ambient' pendant lights in living

Wardrobes

- Custom-designed walk-in robe to master bedroom by Firman joinery

Flooring

- Cavalier Bremworth - Lime light "soundcheck"
- Godfrey Hirst vinyl plank - silver finch

Electrical

- Extensive LED lighting
- Feature lighting to kitchen & entrance

Heating

- Heat pump 9kw Mitsubishi Heatpumper
- Yunka 18kw xander fire place

Insulation

- Pink batts
- 2.6 to walls
- 3.6 to ceiling
- 50m polystyrene to underfloor

Power

- Single phase

Other

- 10 year masterbuild warranty
- Extensively landscaped
- Sealed driveway & paths



David Reid Homes Waitaki/South Canterbury
Build Mack (2016) Ltd

P. 03 426 0040 **M.** 027 901 7547 **A.** 86 Weston Rd, Weston, Oamaru
E. aaron.mackay@davidreidhomes.co.nz

0800 000 007 | davidreidhomes.co.nz

